



PHOENIX[®]
DURABILITY X DESIGN™



SturdiLED[®]

Marine Grade LED Floodlight
For US Navy MIL Spec Lighting
Replaces SYM 316 (MIL-F-16377/60)

US Design Patent No. US D708,776

Designed to replace low-wattage floodlights
For use above and below deck, and in high shock and vibration applications
Durable, compact design for the world's harshest marine environments
LED technology increases efficiency, eliminates maintenance and supports green initiatives

Dimensions



Specifications

Construction	Marine grade cast aluminum housing
Finish	Black thermoset powder coat finish
Hardware	Marine grade (316) stainless steel external hardware
Lens	Impact-resistant, UV-stable polycarbonate Replaceable Flood (45°) beam angle - standard Spot (28°) accessory kit (STL-28D)
Light source	Lumileds Luxeon T light emitting diodes (LED) 29W, 2400 lumens Conformal coated circuit board CRI ≥ 74 CCT 5300K 50,000 hour rated life
Power source	120-277V, 50/60Hz (UNIV) Fully potted Replaceable Over-voltage, over-current and short-circuit protection
Wiring	72.00 inch (1829 mm) cord with pigtail NEMA 5-15 plug accessory kit
Ambient operating temperature	-30°C to +50°C
Mounting	Shock mount base - standard Stainless Steel Harp Kit (STL-HRP) Four (4) Bolt Retrofit Kit (STL-4B)
Weight	Fixture: 9.5 lb (4.3 kg) Packaged: 11.0 lb (5.0 kg)
Visor accessory	Protects lens, directs light and reduces glare (STL-VIS)
Warranty	5 years

Compliances

ETL/cETL Certified to:

- UL 1598 Suitable for Wet Locations
- UL 1598A Marine Outside Type (Saltwater)
- CSA C22.2 No. 250.0

CE

DLC

ABS

IP67 rated

LM79 and LM80 reports available

Ordering Information

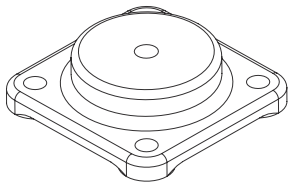
Example: STL-MED-45-UNIV

Fixture	Wattage	Beam Angle	Voltage
STL	MED	45	UNIV

Wattage	Beam Angle	Voltage
MED 29W, 2400 lumens (SYM 316)	45 Flood (45°) beam angle	UNIV 120-277V, 50/60Hz

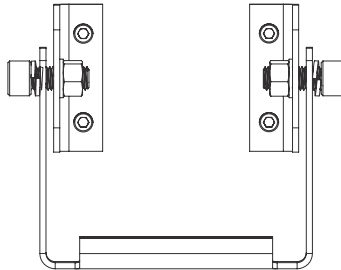
Special Projects: We may be able to accommodate your special projects, so please don't hesitate to ask about additional options. Minimum order quantities and/or extended lead times will apply. Contact your Phoenix representative with specific inquiries.

Accessories (order separately)



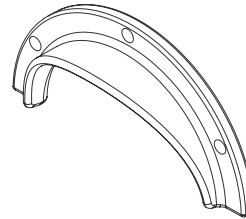
Four (4) Bolt Retrofit Kit

STL-4B



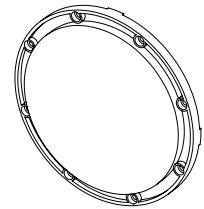
Stainless Steel Harp Kit

STL-HRP



Visor Kit

STL-VIS



28° Lens Kit

STL-28D

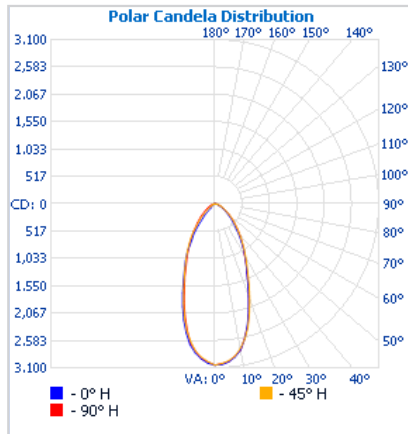
NEMA 5-15 Plug Kit

PLG-515

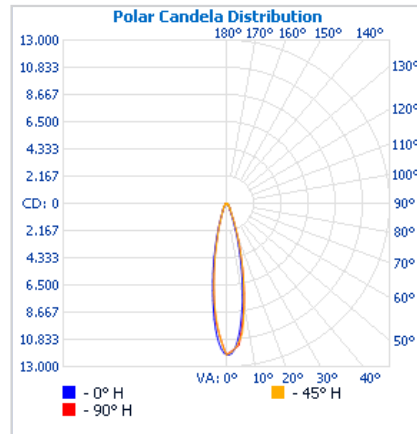


Photometrics

45° Beam (standard)



28° Beam (accessory)



Cover photo: SturdiLED shown on barge exterior deck

Product design and specifications are subject to change without notice. The most current version of this specification sheet can be found on our website: www.phoenixlighting.com.

